

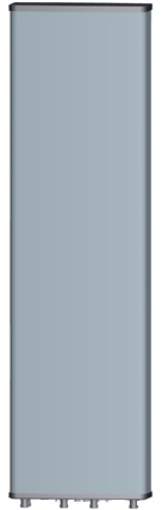
Frequency Range	698-960x2 3400-4200x2
Polarization	±45°
Half-Power Beam Width	65°
Electrical Downtilt	2° - 12°x4

Type OCT4-2B2R-RD65

Base Station Antenna

8-ports 698-960 / 698-960 /3300-4200 / 3300-4200 MHz 65°, 13.5 /13.5 /17.5 /17.5 dBi, 2°-12° /2°-12°/ 2°-12°/ 2°-12° / 2°-12° / 2 - 12°Tilt Antenna With 4 Integrated RCUs.

Electrical Specifications



Frequency Range(MHz)		2x698-960			2x3300-4200	
		698-824	824-894	894-960	3300-3800	3800-4200
Polarization		±45°				
Horizontal 3dB Beamwidth(°)		68	64	60	68	64
Vertical 3dB Beamwidth(°)		17	15.5	14.5	6.8	6
Gain (dBi)		12.5	13	13.5	17	17.5
Electrical Downtilt		2°-12°			2°-12°	
Upper Sidelobe Suppression(dB)	First	≥16	≥16	≥16	≥16	≥16
Front-to-Back Ratio Total Power,±30° (dB)		≥24	≥25	≥25	≥25	≥25
Cross polar ratio	Main direction (dB)	≥17	≥17	≥17	≥17	≥17
	±60° (dB)	≥7	≥7	≥7	≥7	≥7
Isolation ports		≥25 dB				
Isolation Frequency		≥30 dB				
VSWR		< 1.5				
Intermodulation IM3		< -150 dBc(2x43dBm carrier)			/	
Impedance		50 Ω				
Max. Power per Input (at 50°C ambient)		500 W			200 W	
Lightning Protection		DC Ground				

Mechanical Specifications

Radome Material	FiberGlass
Connector Type and Location	4.3-10x8, Bottom iRCU in:1 x 8 pin male iRCU out:1 x 8 pin female
Dimensions,HxWxD(mm)/(inches)	1300 x 499 x 180 / 51.2 x 19.6 x 7.1
Packing Size(mm)/(inches)	1600 x 600 x 310 / 63 x 23.6 x 12.2
Weight ,w/o Mounting kit(kg)/(lbs)	28.5 / 62.7
Weight w/ Downtilt Bracket(kg)/(lbs)	34.5 / 75.9
Weight w/ Fixed Bracket(kg)/(lbs)	32.5 / 71.5
Packing Weight (w/ Downtilt Bracket) (kg)/(lbs)	43.5 / 95.7
Packing Weight (w/ Fixed Bracket) (kg)/(lbs)	41.5 / 91.3
Max. Wind Velocity(mph)	150
Mounting hardware	ϕ 50 mm ~ ϕ 115 mm
Operational Temperature(°C)	-40 to +65
Operational Humidity(%)	<95
Wind Load at 100mph (Frontal/lateral/Rearside(N))	748/167/539

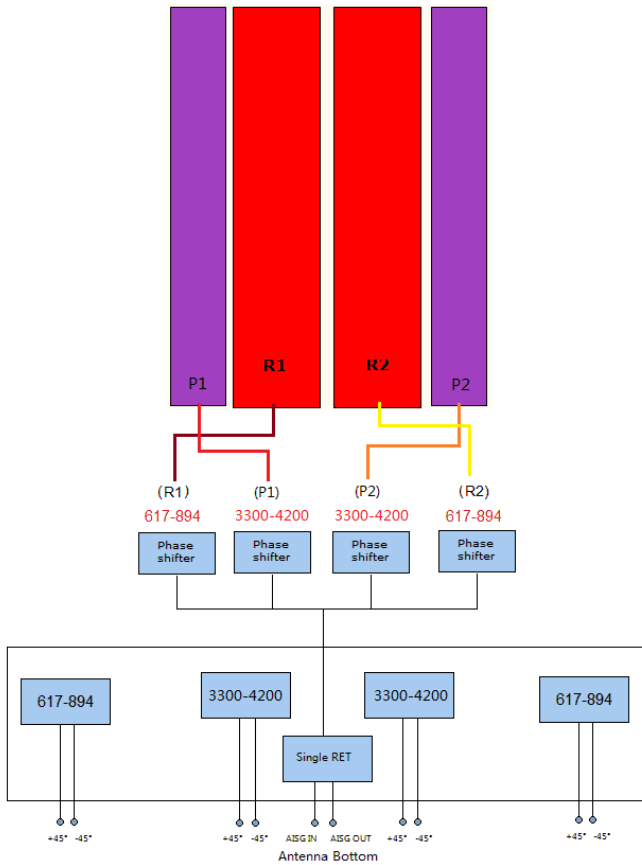
Frequency Range	698-960x2 3400-4200x2
Polarization	±45°
Half-Power Beam Width	65°
Electrical Downtilt	2° - 12°x4

Type OCT4-2B2R-RD65

Integrated RET Properties

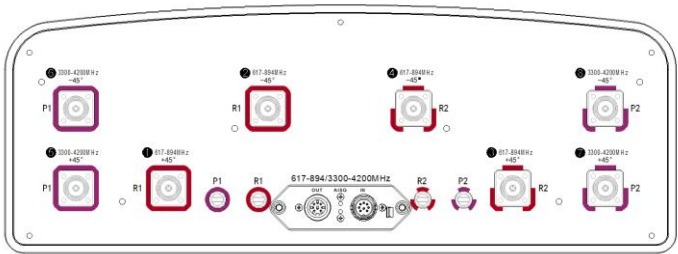
RET Type	4x Type 1 Single RET	
Protocols	Compliant to AISG 2.0/3GPP	
Input voltage range	+10~+30VDC(pin 6)	
Power consumption	<2W(stand by);<13W(motor activated)	
Connectors	AISG	2 x 8 pin connector acc. To IEC 60130-9 Acc.to AISG Daisy chain in:male Daisy chain out:female
	Antenna	Two motor shaft(Embedded motor)
Hardware interface	AISG	RS485A/B(pin5/pin3);Power supply(pin6); DC return(pin7)Acc.to AISG
Adjustment time(full range)	40 sec(typically,depending on antenna)	
Adjustment Cycles	≥10000	
Torque Max	≥160mN.m	
Lightning Protection Rating	IEC 61000-4-5 Current Pulse Profile,8/20 μs 10 Repetitions Min.@ 6kA IEC 61312-1 Annex B Current Pulse Profile, 10/350 μs,200 Repetitions Min. @ 0.6kA	

COMPREHENSIVE TILT CONFIGURATION



Frequency Range	Array	RET Unique ID
617-894MHz	R1	NDPMXXXXXXXX-6089R1
617-894MHz	R2	NDPMXXXXXXXX-6089R2
3300-4200MHz	P1	NDPMXXXXXXXX-3342P1
3300-4200MHz	P2	NDPMXXXXXXXX-3342P2

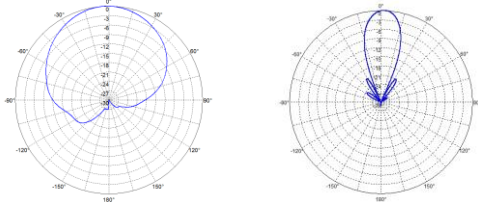
Note: (1) Physical RET Unit containing (4) Single RET



Frequency Range	698-960x2 3400-4200x2
Polarization	±45°
Half-Power Beam Width	65°
Electrical Downtilt	2° - 12°x4

Type **OCT4-2B2R-RD65**

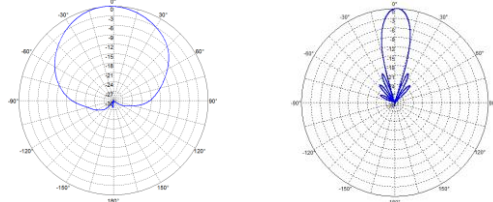
Radiation Pattern (698 - 824 MHz)



Horizontal Pattern

Vertical Pattern

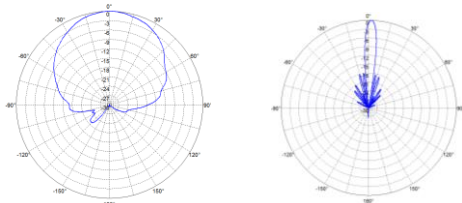
Radiation Patterns (824 - 960 MHz)



Horizontal Pattern

Vertical Pattern

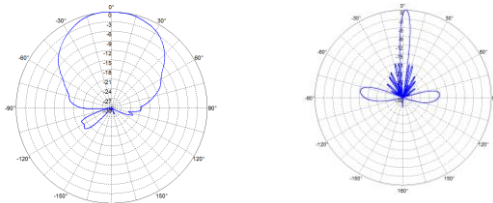
Radiation Pattern (3300 - 3800 MHz)



Horizontal Pattern

Vertical Pattern

Radiation Pattern (3800 - 4200 MHz)



Horizontal Pattern

Vertical Pattern