

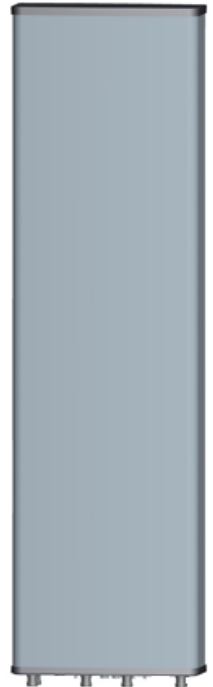
Frequency Range	617-894x2 1695-2400x2
Polarization	±45°
Half-Power Beam Width	65°
Electrical Downtilt	2° - 12°x4

**Type OCT9-2LX2HX-HG65**



**Base Station Antenna**

8-ports 617-894 / 617-894 /1695-2400 /1695-2400 MHz 65°, 17 / 17 / 18 / 18 dBi, 2°-12° / 2°-12° / 2°-12° / 2°-12° Tilt Antenna With 4 Integrated RCUs.



**Electrical Specifications**

Frequency Range(MHz)		2x617-894			2x1695-2400		
		617-698	698-824	824-894	1695-1920	1920-2180	2300-2400
Polarization		±45°					
Horizontal 3dB Beamwidth(° )		72	66	63	66	63	58
Vertical 3dB Beamwidth(° )		9	7.9	7.0	5.5	5	4.3
Gain (dBi)		16.1	16.6	16.8	17.6	18.0	18.1
Electrical Downtilt		2°-12°			2°-12°		
Upper Sidelobe Suppression(dB)	First	≥16	≥16	≥16	≥16	≥16	≥16
Front-to-Back Ratio Total Power, ±30° (dB)		≥23	≥24	≥25	≥25	≥25	≥25
Cross polar ratio	Main direction(dB)	≥17	≥17	≥17	≥17	≥17	≥17
	±60° (dB)	≥7	≥7	≥7	≥7	≥7	≥7
Isolation ports		≥25 dB					
Isolation Frequency		≥30 dB					
VSWR		< 1.5					
Intermodulation IM3		< -150 dBc(2x43dBm carrier)					
Impedance		50 Ω					
Max. Power per Input (at 50°C ambient temperature)		500 W			300 W		
Lightning Protection		DC Ground					

**Mechanical Specifications**

Radome Material	Fiberglass
Connector Type and Location	4.3-10x8 ,Bottom iRCU in:1 x 8 pin male iRCU out:1 x 8 pin female
Dimensions,HxWxD(mm)/(inches)	2700 x 499 x 180 / 106.3 x 19.6 x 7.1
Packing Size(mm)/(inches)	3010 x 620 x 325 / 118.5 x 24.4 x 12.8
Weight ,w/o Mounting kit(kg)/(lbs)	50 / 110
Weight w/ Downtilt Bracket(kg)/(lbs)	57 / 125.4
Weight w/ Fixed Bracket(kg)/(lbs)	55 / 121
Packing Weight (w/ Downtilt Bracket) (kg)/(lbs)	67 /147.4
Packing Weight (w/ Fixed Bracket) (kg)/(lbs)	65 / 143
Max. Wind Velocity(mph)	150
Mounting hardware	ϕ 50 mm ~ ϕ 115 mm
Operational Temperature(°C)	-40 to +65
Operational Humidity(%)	<95
Wind Load at 100mph (Frontal/lateral/Rearside(N))	1568/308/1130

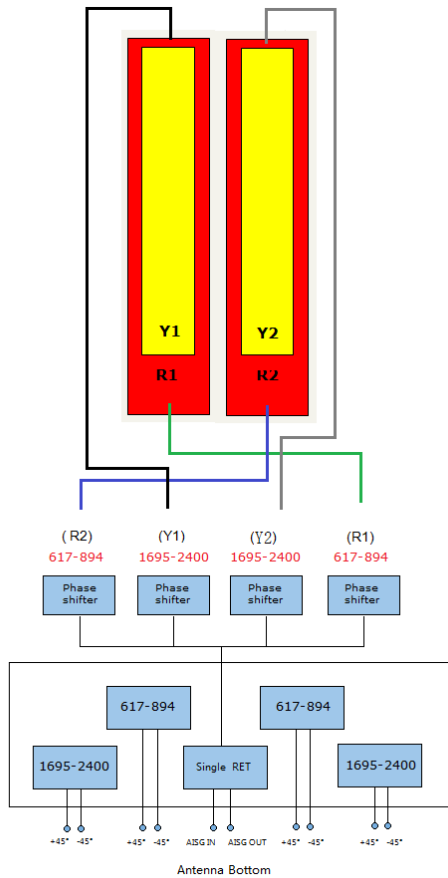
Frequency Range	617-894x2 1695-2400x2
Polarization	±45°
Half-Power Beam Width	65°
Electrical Downtilt	2° - 12°x4

**Type OCT9-2LX2HX-HG65**

**Integrated RET Properties**

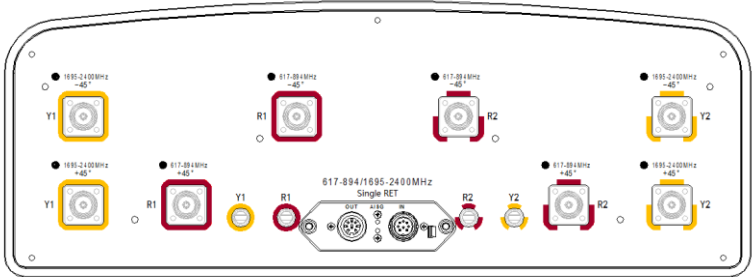
RET Type	4x Type 1 Single RET	
Protocols	Compliant to AISG 2.0/3GPP	
Input voltage range	+10~+30VDC(pin 6)	
Power consumption	<2W(stand by);<13W(motor activated)	
Connectors	AISG	2 x 8 pin connector acc. To IEC 60130-9 Acc.to AISG Daisy chain in:male Daisy chain out:female
	Antenna	Two motor shaft(Embedded motor)
Hardware interface	AISG	RS485A/B(pin5/pin3);Power supply(pin6); DC return(pin7)Acc.to AISG
Adjustment time(full range)	40 sec(typically,depending on antenna)	
Adjustment Cycles	≥10000	
Torque Max	≥160mN.m	
Lightning Protection Rating	IEC 61000-4-5 Current Pulse Profile,8/20 μs 10 Repetitions Min.@ 6kA IEC 61312-1 Annex B Current Pulse Profile, 10/350 μs,200 Repetitions Min. @ 0.6kA	

**COMPREHENSIVE TILT CONFIGURATION**



Frequency Range	Array	RET Unique ID
617-894MHz	R1	NDPMXXXXXXXX-6089R1
617-894MHz	R2	NDPMXXXXXXXX-6089R2
1695-2400MHz	Y1	NDPMXXXXXXXX-1724Y1
1695-2400MHz	Y2	NDPMXXXXXXXX-1724Y2

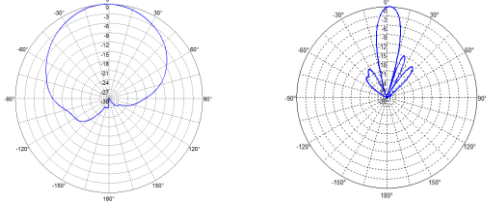
Note: (1) Physical RET Unit containing (4) Single RET



Frequency Range	617-894x2 1695-2400x2
Polarization	±45°
Half-Power Beam Width	65°
Electrical Downtilt	2° - 12°x4

**Type OCT9-2LX2HX-HG65**

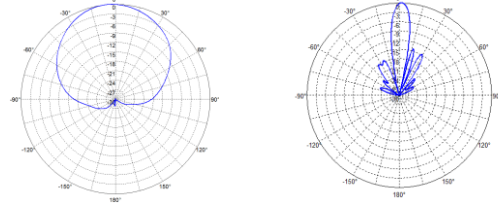
Radiation Pattern (617 - 824 MHz)



Horizontal Pattern

Vertical Pattern

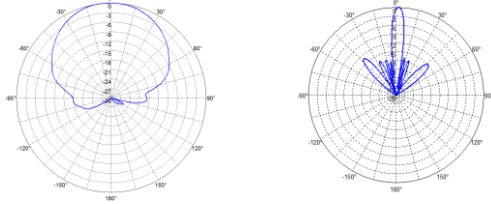
Radiation Patterns (824 - 894 MHz)



Horizontal Pattern

Vertical Pattern

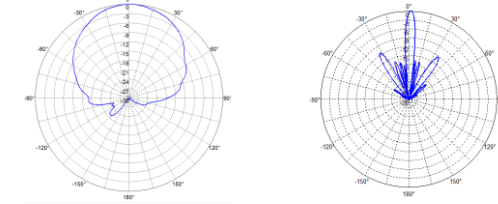
Radiation Pattern (1695 - 1920 MHz)



Horizontal Pattern

Vertical Pattern

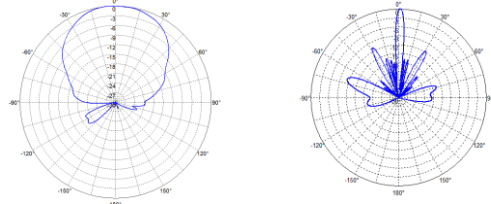
Radiation Patterns (1920 - 2180 MHz)



Horizontal Pattern

Vertical Pattern

Radiation Pattern (2180 - 2400 MHz)



Horizontal Pattern

Vertical Pattern